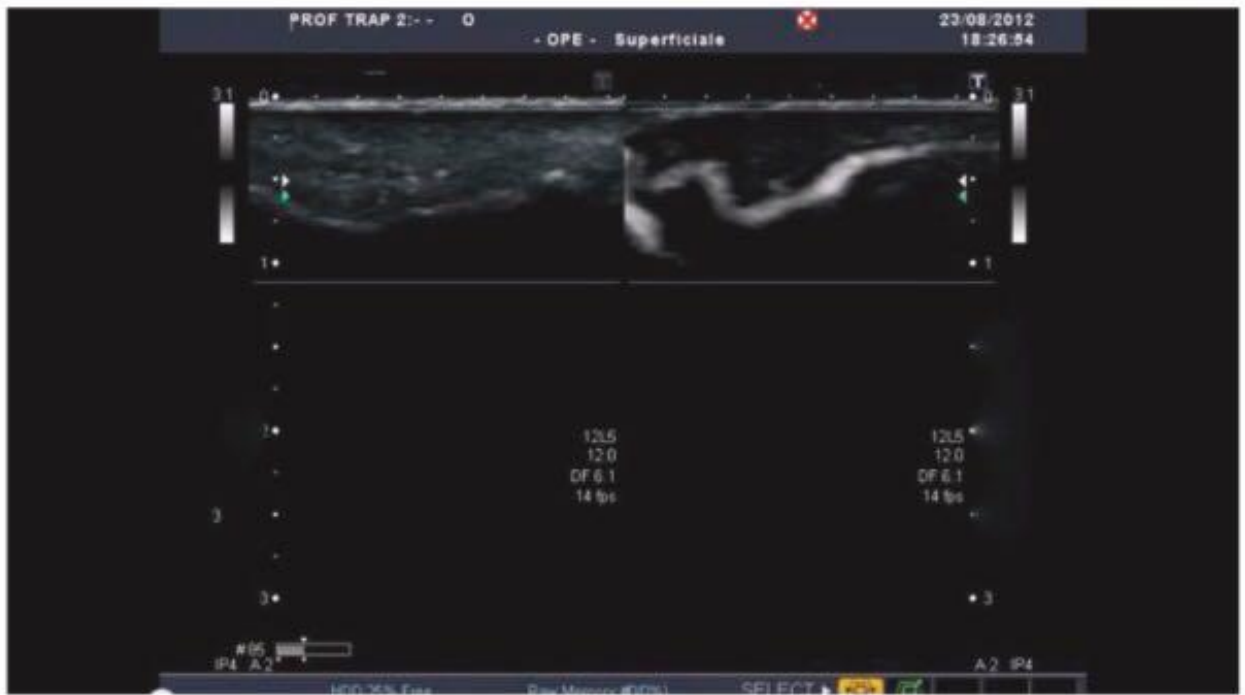


SEP 18TH 2016



PUBLICATION

EARLY DIAGNOSIS AND STAGING OF RHEUMATOID ARTHRITIS

DESCRIZIONE

PRELIMINARY DATA ON THE ROLE OF CONTRAST ENHANCED ULTRASOUND (CEUS) IN EARLY DIAGNOSIS AND STAGING OF RHEUMATOID ARTHRITIS This paper is concerning with Rheumatoid Arthritis (RA) and the use of CEUS in the diagnosis and staging of the disease. 51 patients were studied for this clinical symptoms, radiology and biomarkers. The contrast enhanced ultrasound allows to establish an early diagnosis and staging of RA by monitoring the vascular progression of the synovial membrane. There are good perspectives for further confirmation of the methodology.

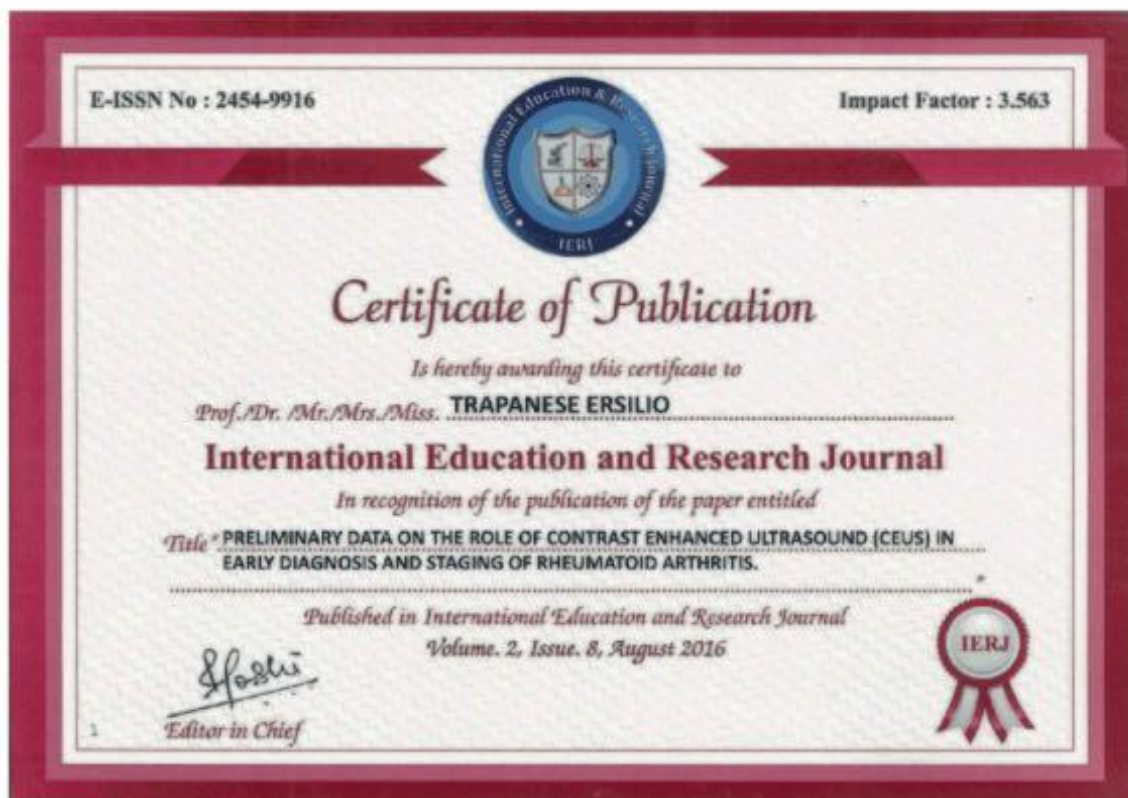


Figure 1.

BIBLIOGRAFIA

1. Altucci P. and Tarro G., 2014. Value of Etio-pathogenesis in Internal Medicine. *PoliclinicoSez. Med.* 2014; 121: 61-81.
Doi.10.7353/polmed.2014.121.061.
2. Arit F., Chalopin C, Muns A., Meixensberger J., Lindner D., 2016. Intraoperative 3D contrast-enhanced ultrasound (CEUS): a prospective study of 50 patients with brain tumours. *Pub Med*, April 2016
3. Berghin E. Johansson T., Sundin U., Jidell E., Wadell G., Hallmans G., Rantap-Dahlqvist S., 2006. Radiological outcome in rheumatoid arthritis is predicted by presence of antibodies against cyclic citrullinated peptide before and at disease onset and by IgA-RF at disease onset. *Ann Rheum Dis.* 2006;65:453–458.



ERSILIO TRAPANESE
Sonographer